

# A GUIDE TO RESPONSIBLE INNOVATION

NWO-MVI maps and facilitates the incorporation of ethical and societal aspects of technological innovations early on in the design process. Our aim? Responsible innovations that enjoy broad support in society.

## SPEARHEADS OF THE NWO-MVI APPROACH

### Societal relevance and valorisation

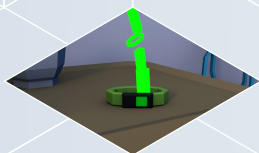
NWO-MVI contributes to better solutions of societal challenges. Stakeholders are closely involved in the research and research results are suitable for practical implementation.

### Interdisciplinarity

A collaborative, interdisciplinary approach is needed to tackle the complex challenges that society faces.

### Proactive creation or design perspective

Ethical and societal aspects are incorporated in the design process of an innovation from the onset.



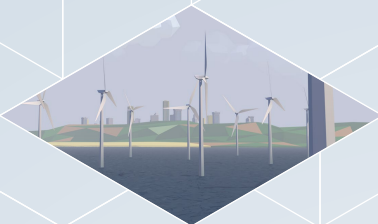
RESPONSIBLE INNOVATIONS



RESULTS OF THE NWO-MVI APPROACH



GUIDELINES AND TOOLS TO GET TO RESPONSIBLE INNOVATIONS



## HOW

Stakeholders are closely involved and regularly asked for feedback. Based on their input, innovations are adjusted during the design process.

Researchers in the humanities, natural sciences and social sciences connect early on in the design process. This way, challenges can be approached from all perspectives to achieve the aimed solutions.

From the very start of the design process, researchers actively map the possible ethical and societal aspects of the innovation. These are incorporated in the design.

